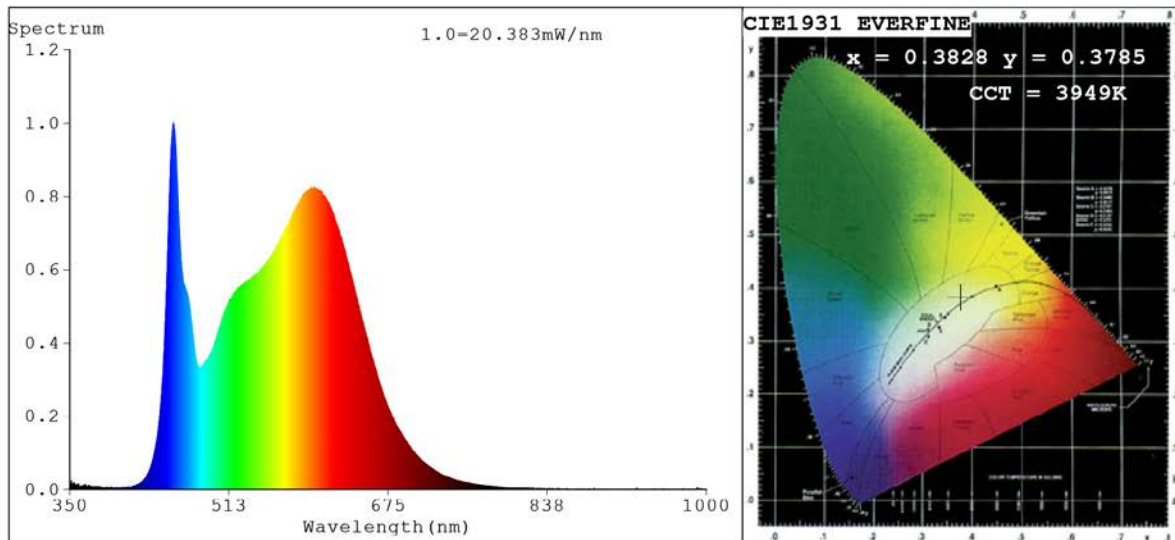


Spectrum Test Report



Color Parameters:

Chromaticity Coordinate: $x=0.3828$ $y=0.3785$ $u'=0.2260$ $v'=0.5027$
 CCT=3949K (Duv=0.0001) Dominant WL:Ld =579.2nm Purity=28.5%
 Ratio:R=19.3% G=76.3% B=4.4%;;Peak WL:Lp=455.7nm FWHM=24.2nm
 Render Index:Ra=87.0 CRI=82.3 TM30:Rf=84 Rg=94
 R1 =88 R2 =96 R3 =95 R4 =84 R5 =87 R6 =93 R7 =85
 R8 =69 R9 =26 R10=90 R11=85 R12=67 R13=91 R14=98 R15=81

Photo Parameters:

Flux = 951.5 lm Eff. : 91.50 lm/W Fe = 2.959 W

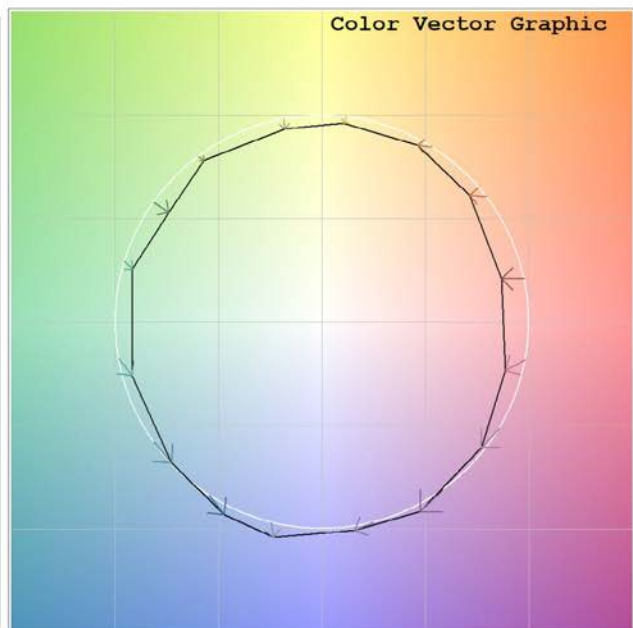
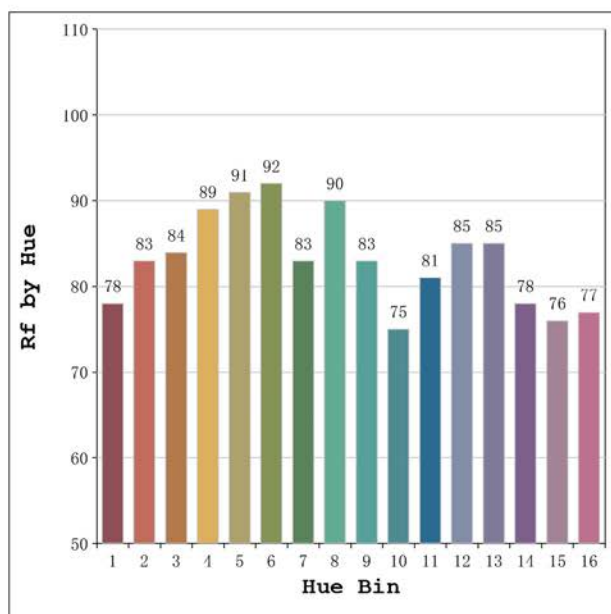
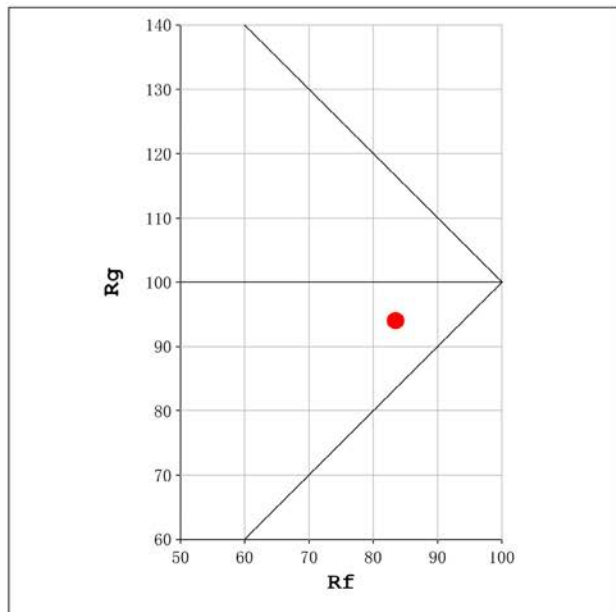
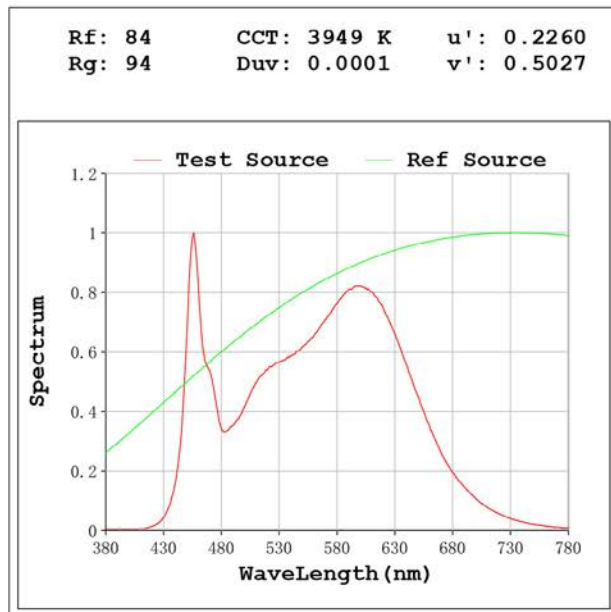
Electrical parameters:

V = 23.998 V I = 0.4333 A P = 10.40 W PF = 1.000

Status: Integral T = 1072 ms Ip = 36485 (56%)

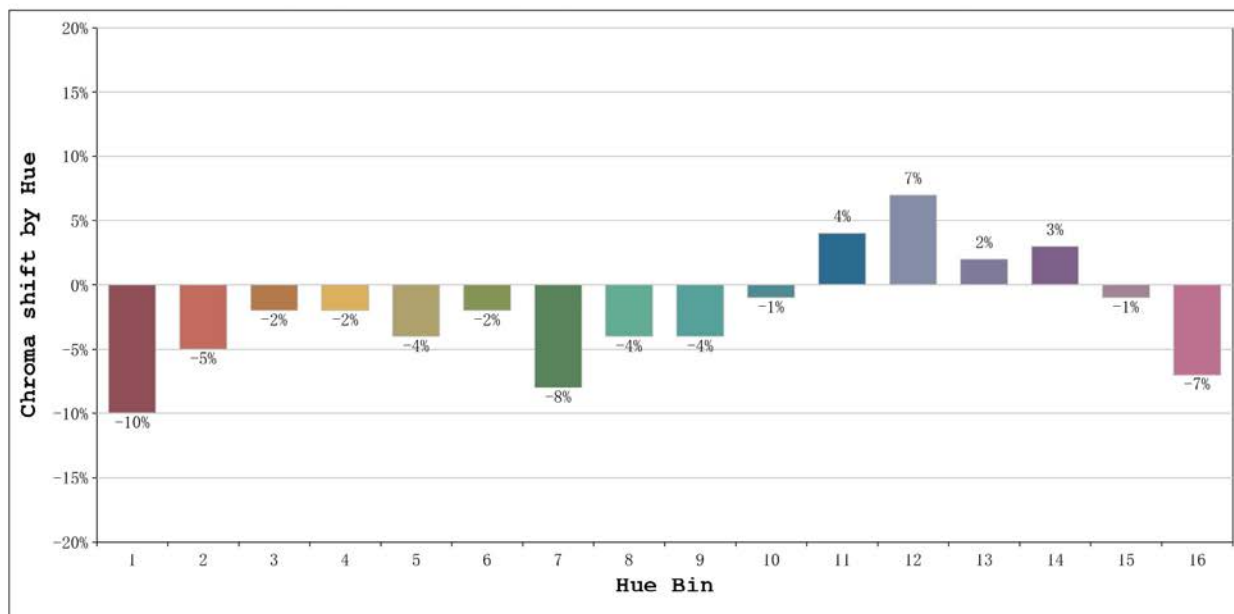
Model:Ecoled Vizcaya pro 4000k
 Tester:Sergio Carneros
 Temperature:25Deg
 Manufacturer:Luz Negra S.L

Number: 33.203
 Date:2025-01-08 13:15:37
 Humidity:57%
 Remarks:100cm de tira flexible



Model:Ecoled Vizcaya pro 4000k
 Tester:Sergio Carneros
 Temperature:25Deg
 Manufacturer:Luz Negra S.L

Number: 33.203
 Date:2025-01-08 13:15:37
 Humidity:57%
 Remarks:100cm de tira flexible



			Graphic shift(%)	
Hue Bin	Hue Angle	Rf	Chroma	Hue
1	0.0° - 22.5°	78	-10	2
2	22.5° - 45.0°	83	-5	5
3	45.0° - 67.5°	84	-2	6
4	67.5° - 90.0°	89	-2	1
5	90.0° - 112.5°	91	-4	0
6	112.5° - 135.0°	92	-2	0
7	135.0° - 157.5°	83	-8	0
8	157.5° - 180.0°	90	-4	3
9	180.0° - 202.5°	83	-4	9
10	202.5° - 225.0°	75	-1	13
11	225.0° - 247.5°	81	4	11
12	247.5° - 270.0°	85	7	3
13	270.0° - 292.5°	85	2	-9
14	292.5° - 315.0°	78	3	-14
15	315.0° - 337.5°	76	-1	-12
16	337.5° - 360.0°	77	-7	-6

Model:Ecoled Vizcaya pro 4000k
 Tester:Sergio Carneros
 Temperature:25Deg
 Manufacturer:Luz Negra S.L

Number: 33.203
 Date:2025-01-08 13:15:37
 Humidity:57%
 Remarks:100cm de tira flexible